

BELL MODEL 212

Pilot Transition

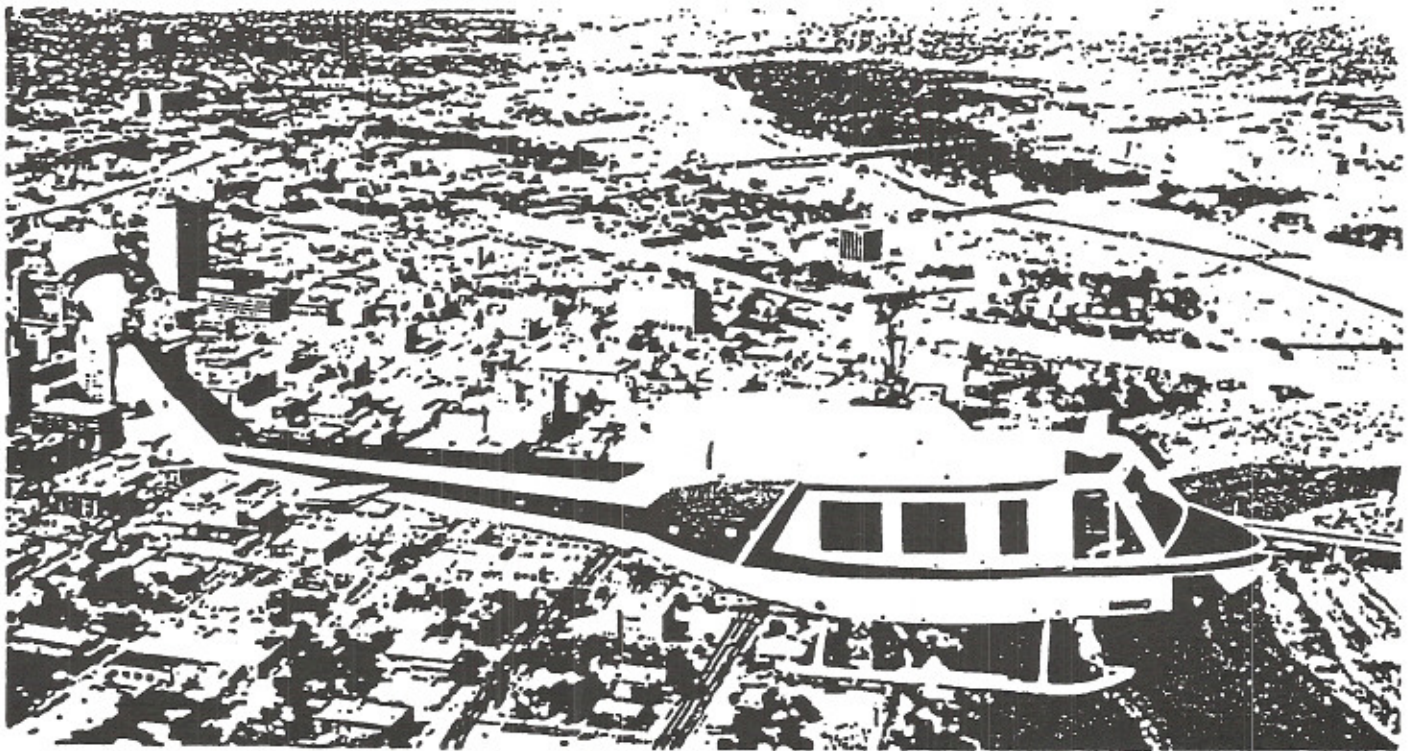


TABLE OF CONTENTS

INTRODUCTION	SECTION 1
GENERAL DESCRIPTION	SECTION 2
CREW COMPARTMENT	SECTION 3
OPERATING LIMITATIONS	SECTION 4
AIRFRAME	SECTION 5
SYSTEMS	SECTION 6
AVIONICS	SECTION 7
UTILITY SYSTEMS	SECTION 8
SERVICING	SECTION 9
WEIGHT & BALANCE	SECTION 10
PERFORMANCE DATA	SECTION 11
FLYING NEIGHBORLY	SECTION 12
OPTIONAL EQUIPMENT	SECTION 13

NOTE: This Pilot's Notebook is applicable to the Model 212 FAA-VFR S/N 30680 and subsequent configuration only

FOR TRAINING PURPOSES ONLY

The information printed herein is specifically prepared to teach systems and operations. Use of this information for reference purposes for operation, service, maintenance or overhaul of a serviceable helicopter is unauthorized. Refer to the applicable approved handbooks.